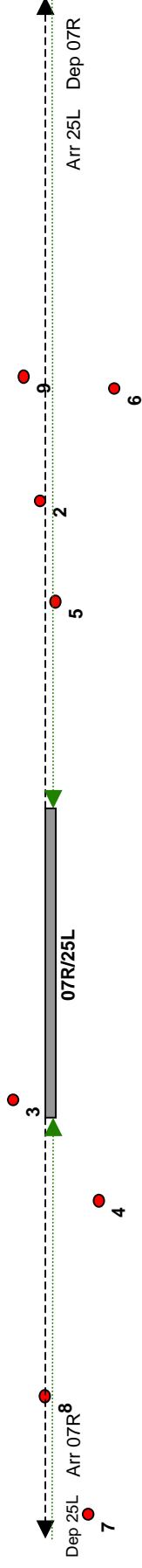


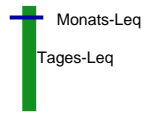
Flughafen Berlin Schönefeld

Fluglärmbericht 7 / 2010

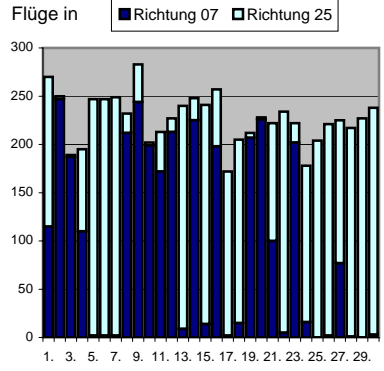
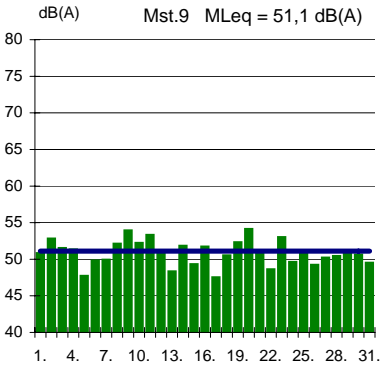
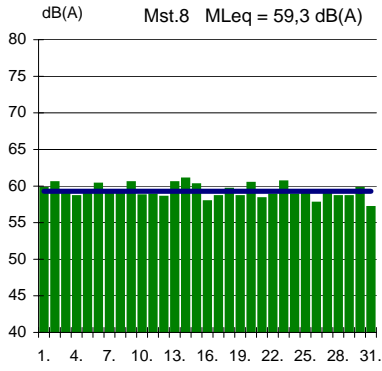
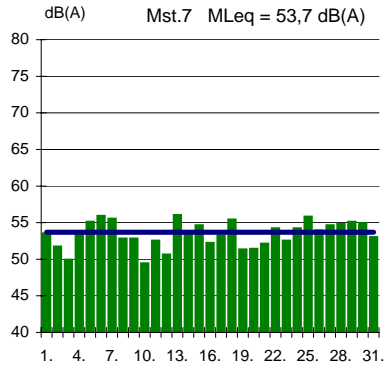
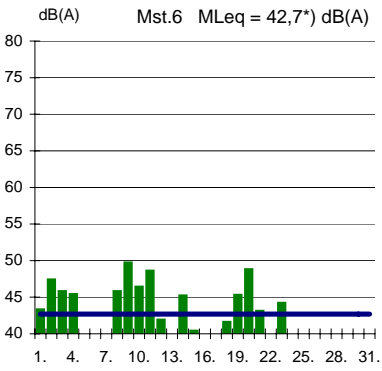
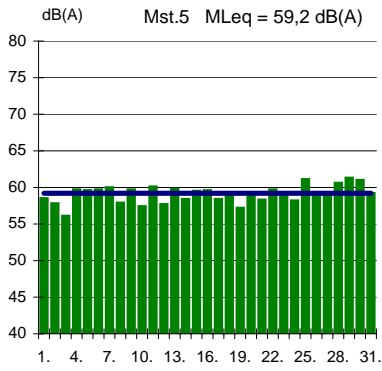
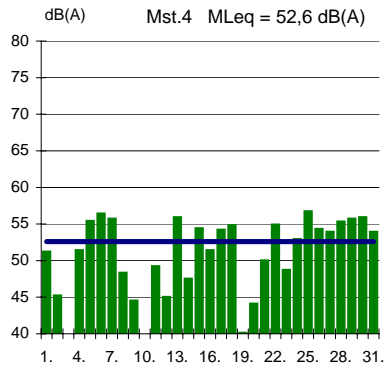
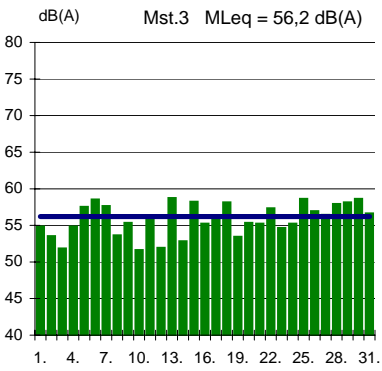
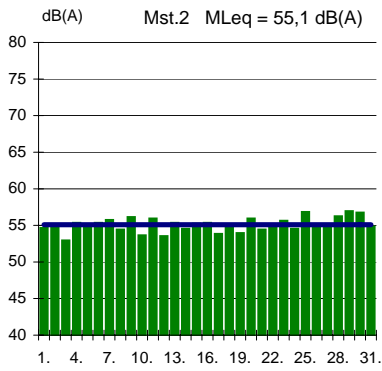


- | | | | |
|-----------------------|------------|--------------------------|------------------------|
| 2 Bohnsdorf, Waldstr. | 4 Selchow | 6 Waltersdf.,Waldsiedlg. | 8 Mahlow, Waldsiedl. |
| 3 Wassmannsdorf | 5 Hubertus | 7 Blankenfelde | 9 Bohnsdorf, Fließstr. |

SXF Äquivalenter Dauerschallpegel (q=4) Monat 7/2010



*) Nach DIN 45643 unzuverlässig. Messwert wegen zu geringer Zahl erkannter Überflüge



Techn. Ausfälle:
 20.07. M4 9'
 Wetterbedingte Ausfälle:
 06.07. 23' 13.07. 46'
 15.07. 10' 17.07. 35'
 24.07. 228' 25.07. 48'

SXF Energieäquiv.

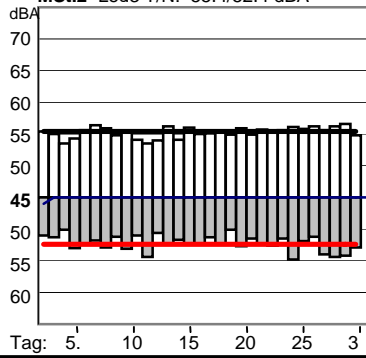
Dauerschallpegel (q=3)

Monat 7 / 2010

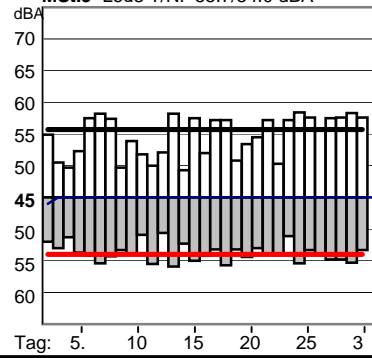


*) Nach DIN 45643 unzuverlässig. Messwert wegen zu geringer Zahl erkannter Überflüge

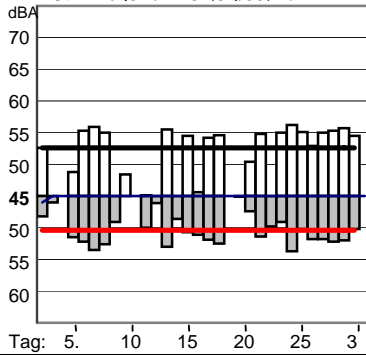
MSt.2 Leq3 T/N: 55.4/52.4 dBA



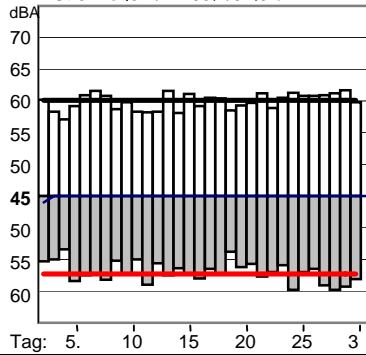
MSt.3 Leq3 T/N: 55.7/54.0 dBA



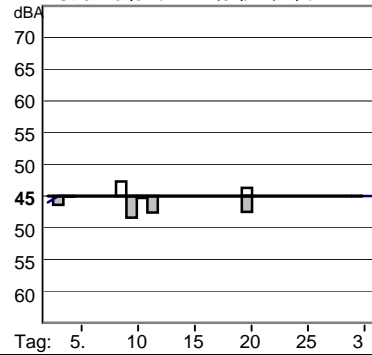
MSt.4 Leq3 T/N: 52.6*/50.4 dBA



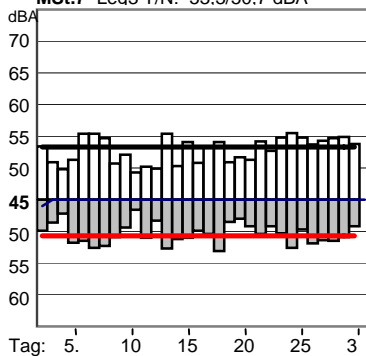
MSt.5 Leq3 T/N: 60.1/57.3 dBA



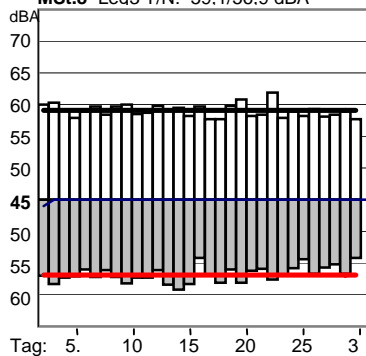
MSt.6 Leq3 T/N: 41.3*/42.4*) dBA



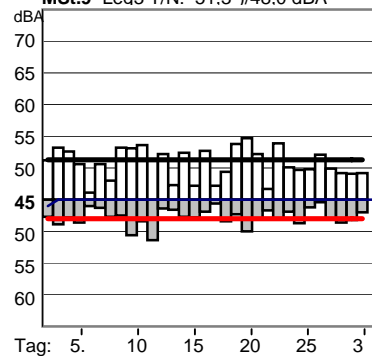
MSt.7 Leq3 T/N: 53.3/50.7 dBA



MSt.8 Leq3 T/N: 59.1/56.9 dBA



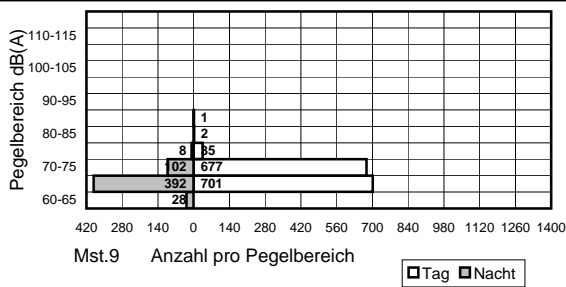
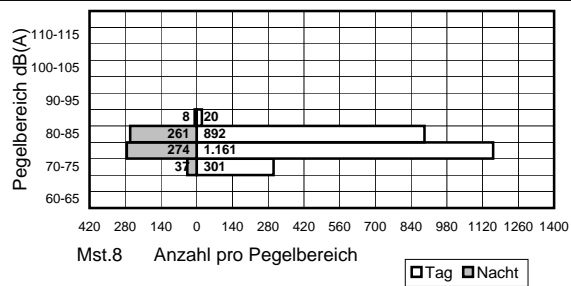
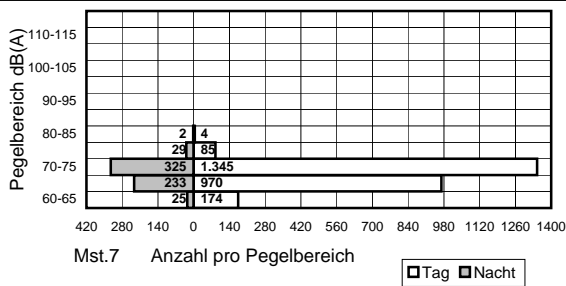
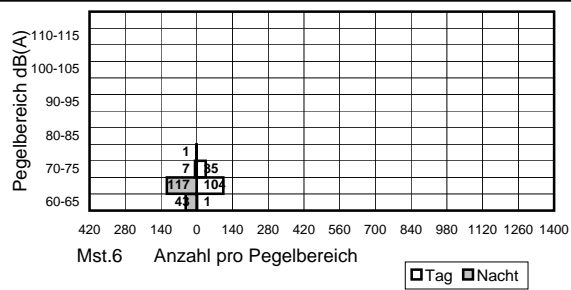
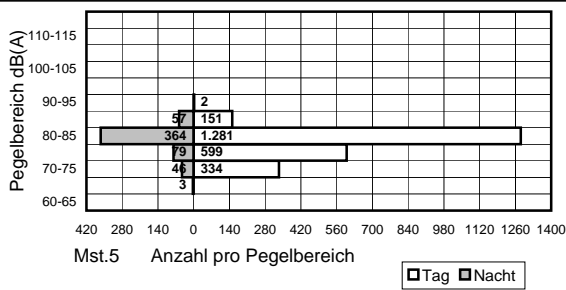
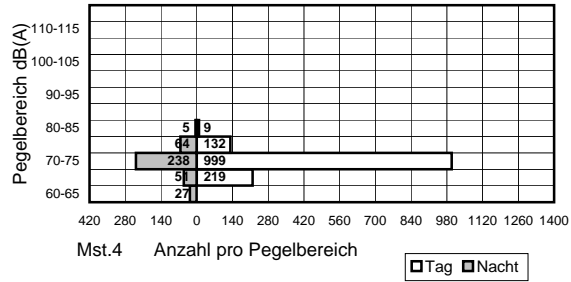
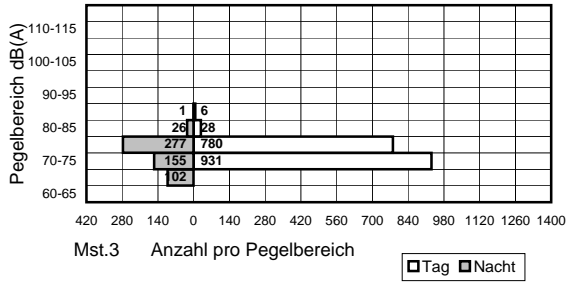
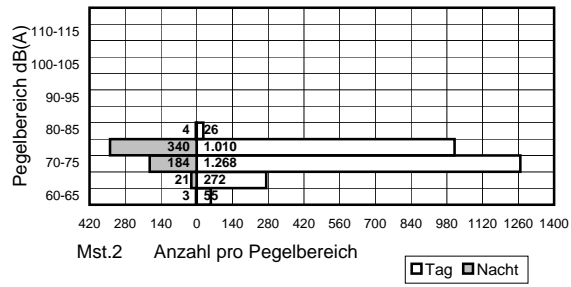
MSt.9 Leq3 T/N: 51.3*/48.0 dBA



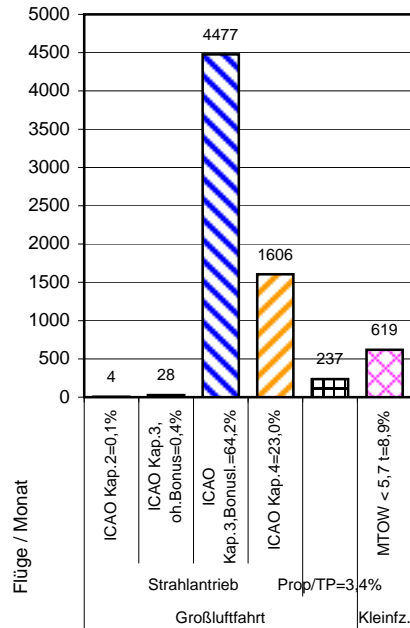
SXF

Monat 7/2010

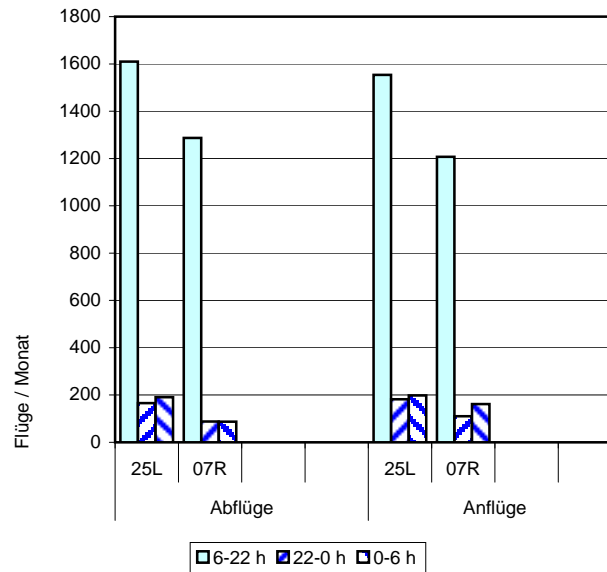
Häufigkeitsverteilung der Maximalschallpegel



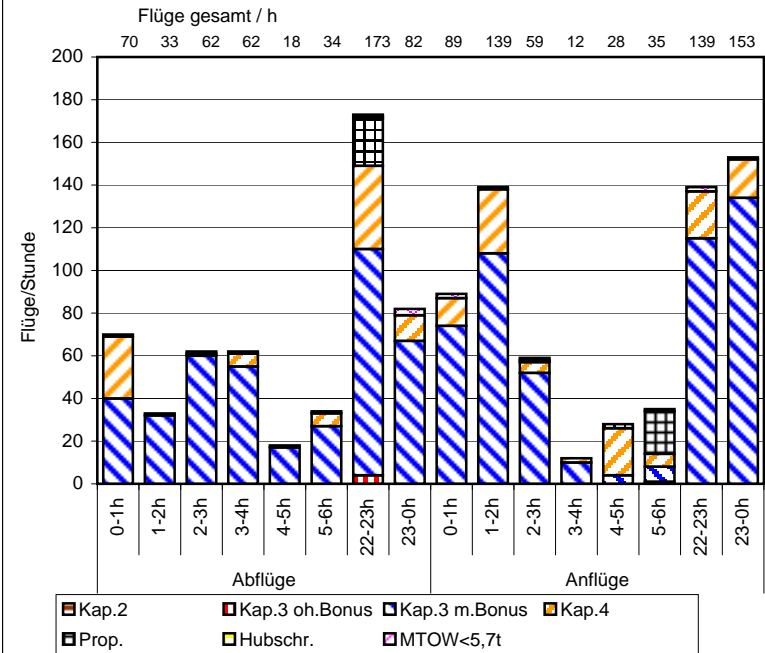
SXF Verteilung der Flüge nach ICAO-Lärmkategorien Juli 2010
Gesamtanzahl Flüge: 6971



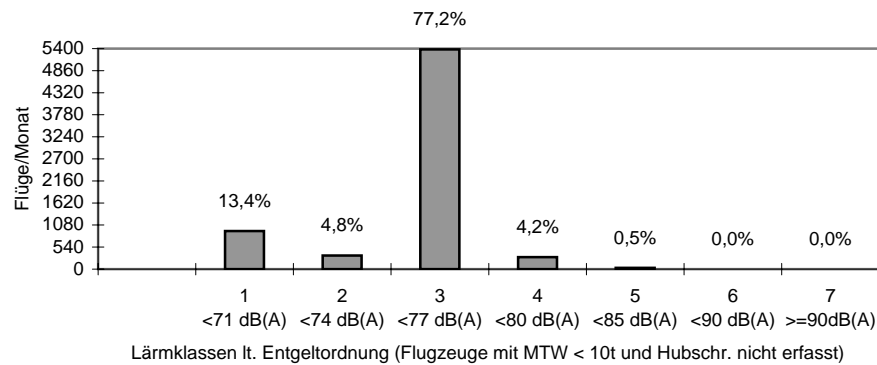
SXF Verteilung der Flüge auf Start-/Landebahnen und nach Tages-/Nachtzeit Juli 2010 (ohne Hubschrauber)



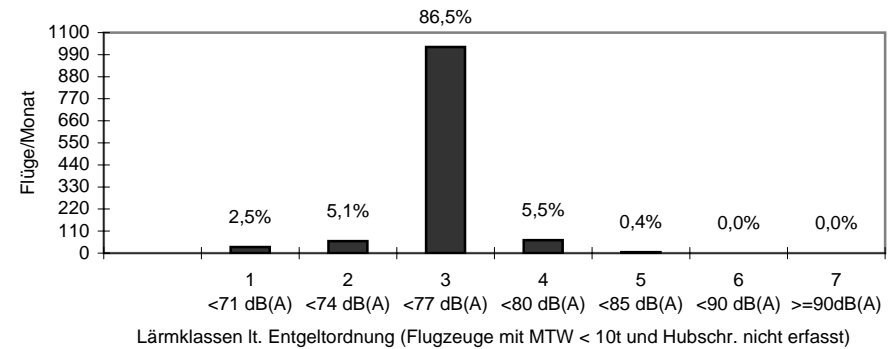
SXF Nachtflüge Juli 2010



Verteilung der Flüge auf Lärmklassen (0 - 24 h) Juli 2010



Verteilung der Nachtflüge auf Lärmklassen (22 - 6 h) Juli 2010



SXF Äquivalenter Dauerschallpegel (q=4)

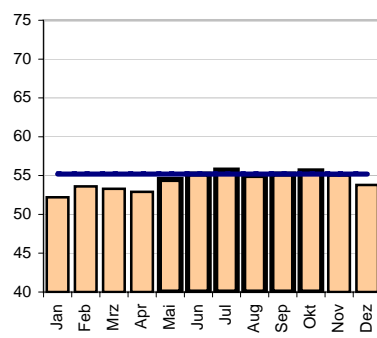
Jahresvergl. 2008/2009



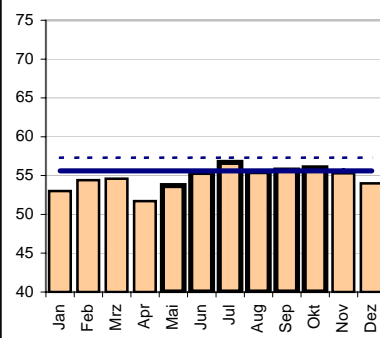
Stark umrandet: 6 verkehrsreichste Monate

*) Nach DIN 45643 unzuverläss. Messwert wegen zu geringer Zahl erkannter Überflüge

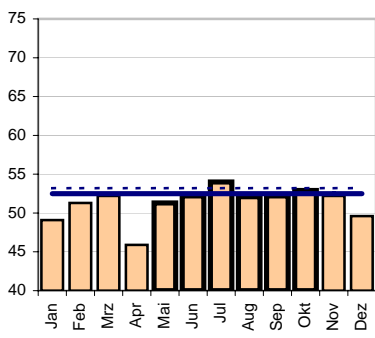
dB(A) Mst.2 JLeq:55,4 / 55,2dB(A)



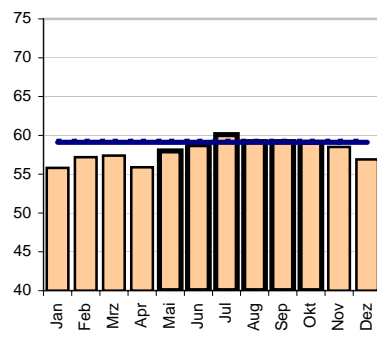
dB(A) Mst.3 JLeq:57,3 / 55,6dB(A)



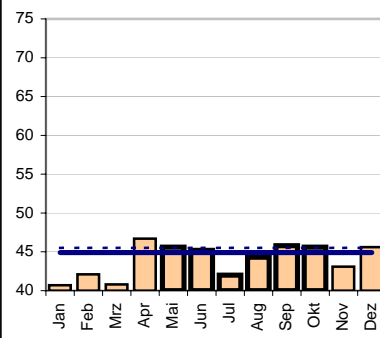
dB(A) Mst.4 JLeq:53,2 / 52,5dB(A)



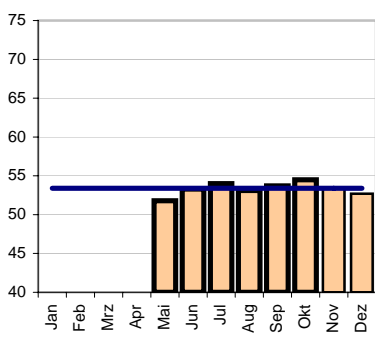
dB(A) Mst.5 JLeq:59,4 / 59,1dB(A)



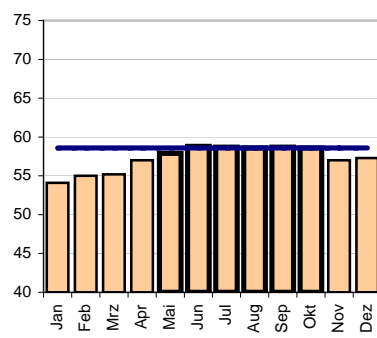
dB(A) Mst.6 JLeq:45,5 / 44,9dB(A)*



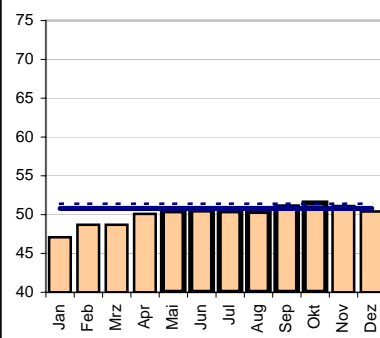
dB(A) Mst.7 JLeq:0,0 / 53,4dB(A)



dB(A) Mst.8 JLeq:58,4 / 58,6dB(A)



dB(A) Mst.9 JLeq:51,4 / 50,8dB(A)



SXF Energieäquiv. Dauerschallpegel (q=3)

Jahresvergl. 2008/2009

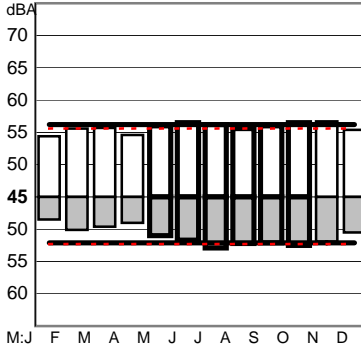
JLeq 2008 Tag(T)
JLeq 2009 Tag(T)

JLeq 2009 Nacht(N)
JLeq 2008 Nacht(N)

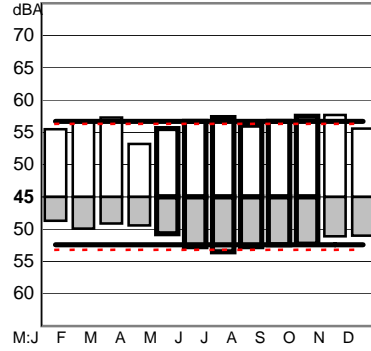
Stark umrandet: 6 verkehrsreichste Monate

*) Nach DIN 45643 unzuverläss. Messwert wegen zu geringer Zahl erkannter Überflüge

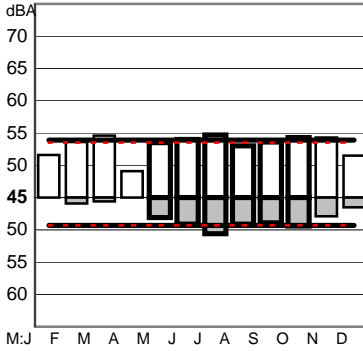
MSt.2 T=56,2 N=52,1dBA



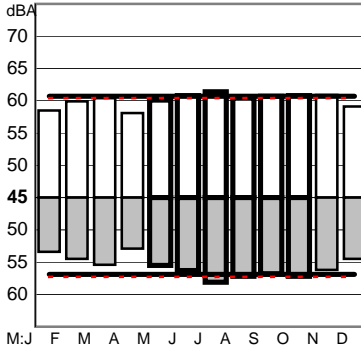
MSt.3 T=56,7 N=52,4dBA



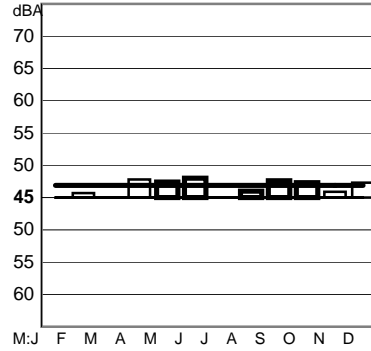
MSt.4 T=53,9 N=49,3dBA



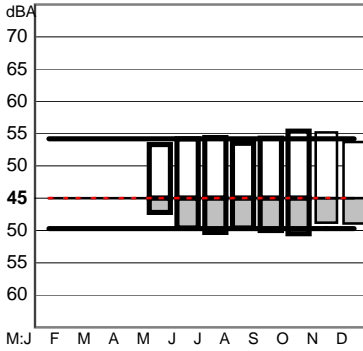
MSt.5 T=60,7 N=56,9dBA



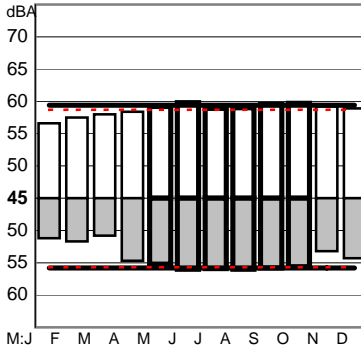
MSt.6 T=46,9*) N=43,1*)dBA



MSt.7 T=54,2 N=49,7dBA



MSt.8 T=59,4 N=55,8dBA



MSt.9 T=51,3*) N=47,5dBA

